

# 11 期數的住宅物業的樓面平面圖 FLOOR PLANS OF RESIDENTIAL PROPERTIES IN THE PHASE

## 樓面平面圖中所使用名詞及簡稱之圖例

### Legend of terms and abbreviations used on Floor Plan

ACCESS PANEL	= Access panel	= 檢修門
ACC. LIFT	= Accessible lift	= 傷健人士升降機
ACOUSTIC BALCONY	= Acoustic balcony	= 隔音露台
ACOUSTIC WINDOW	= Acoustic window	= 隔音窗
AT _/F ONLY	= At _/F only	= 只設於 _ 樓
A/C AREA	= Air conditioner area	= 冷氣機區
A/C PLATFORM	= Air conditioner platform	= 冷氣機平台
A/C PLATFORM ABOVE	= Air conditioner platform above	= 冷氣機平台置上
A/C PLATFORM BELOW	= Air conditioner platform below	= 冷氣機平台置下
A.D.	= Air Duct	= 通風管道
A.F.	= Architectural feature	= 建築裝飾
A.F. ABOVE	= Architectural feature above	= 建築裝飾置上
A.F. BELOW	= Architectural feature below	= 建築裝飾置下
BAL.	= Balcony	= 露台
BAL. ABOVE	= Balcony above	= 露台置上
BAL. BELOW	= Balcony below	= 露台置下
BATH	= Bathroom	= 浴室
BEDROOM	= Bedroom	= 睡房
BUILDING LINE ABOVE	= Building line above	= 建築物外線置上
COMMON AREA	= Common area	= 公用地方
CORRIDOR	= Corridor	= 走廊
C.W. ABOVE	= Curtain wall above	= 幕牆置上
DOG HOUSE	= Dog house	= 室外管道房
ELV.	= Extra low voltage electrical duct	= 特低壓電線槽
E.M.C.	= Electrical meter cabinet	= 電錶櫃
E.M.R.	= Electrical meter room	= 電錶房
FIREMAN'S LIFT LOBBY	= Fireman's lift lobby	= 消防員升降機大堂
FIXED FIRE PUMP ROOM	= Fixed fire pump room	= 固定消防泵房
FLAT ROOF	= Flat roof	= 平台
FLAT ROOF (COMMON AREA)	= Flat roof (common area)	= 平台 (公用地方)
FLAT ROOF BELOW	= Flat roof below	= 平台置下
FLUSHING WATER PUMP ROOM	= Flushing water pump room	= 沖廁水泵房
FOR P.W. VENTING	= For pipe well venting	= 用作管道井通風



### 樓面平面圖中所使用名詞及簡稱之圖例

#### Legend of terms and abbreviations used on Floor Plan

FOR T2	= For Tower 2	= 於第 2 座
FOR _/F ONLY	= For _/F only	= 只設於 _ 樓
F.S. WATER TANK	= Fire service water tank	= 消防水缸
F.S. WATER TANK ROOM	= Fire service water tank room	= 消防水缸房
H.R.	= Hose reel	= 消防喉轆
INACCESSIBLE FLAT ROOF	= Inaccessible flat roof	= 不能進出的平台
KIT.	= Kitchen	= 廚房
LANDSCAPED AREA (INACCESSIBLE COMMON AREA)	= Landscaped area (inaccessible common area)	= 園景區 (不能進出的公用地方)
LAV.	= Lavatory	= 洗手間
LIFT	= Lift	= 升降機
LIFT LOBBY	= Lift lobby	= 升降機大堂
LIFT OVERRUN	= Lift overrun	= 升降機槽
LIV. / DIN.	= Living room/dining room	= 客廳 / 飯廳
L.W.	= Light well	= 天井
NOISE ABSORPTIVE WALL LINING	= Noise absorptive wall lining	= 吸音牆封板
METAL GRATING PLATFORM	= Metal grating platform	= 金屬格柵平台
METAL GRILLE ABOVE	= Metal grille above	= 金屬格柵置上
M. BATH	= Master bathroom	= 主人浴室
M. BEDROOM	= Master bedroom	= 主人睡房
M.L. AT H/L	= Metal louver at high level	= 金屬百葉設在高位
OPEN KIT.	= Open kitchen	= 開放式廚房
OPEN FLAT ROOF	= Open flat roof	= 露天平台
OPEN FLAT ROOF BELOW	= Open flat roof below	= 露天平台置下
PLANTER	= Planter	= 花槽
PRIVATE GARDEN	= Private garden	= 私人花園
POTABLE WATER PUMP ROOM	= Potable water pump room	= 食水泵房
POTABLE WATER TANK	= Potable water tank	= 食水水缸
PRIVATE ROOF	= Private roof	= 私人天台
P.D.	= Pipe duct	= 管道槽
P.D.(F.S.)	= Fire service pipe duct	= 消防管道槽
P.L.	= Protected lobby	= 防煙間
P.W.	= Pipe well	= 管道井
ROOF OF BAL.	= Roof of balcony	= 露台頂部



### 樓面平面圖中所使用名詞及簡稱之圖例

#### Legend of terms and abbreviations used on Floor Plan

ROOF OF U.P.	= Roof of utility platform	= 工作平台頂部
R.C. PLINTH	= Reinforced concrete plinth	= 鋼筋混凝土基座
R.S.M.R.R.	= Refuse storage and material recovery room	= 垃圾及物料回收室
SELF-CLOSING DOOR (NOT FOR LIGHTING & VENTILATION)	= Self-closing door (not for lighting & ventilation)	= 自動關閉門 (不用作照明及通風)
STORE	= Store	= 士多房
STOVE	= Stove	= 爐
ST-T _ _	= Staircase-Tower _ _	= 第 _ 座 _ 號樓梯
TOWER	= Tower	= 座
T.R.S.	= Temporary refuge space	= 臨時庇護處
UP	= Up	= 往上
U.P.	= Utility platform	= 工作平台
U.P. ABOVE	= Utility platform above	= 工作平台置上
U.P. BELOW	= Utility platform below	= 工作平台置下
W.M.C.	= Water meter cabinet	= 水錶櫃
_ H.A.F.F.L	= _mm high above floor finish level	= 離地台完成面 _ 毫米高

#### 適用於本節各樓面平面圖之備註：

1. 部分樓層外牆設有建築裝飾及/或外露喉管/管道。詳細資料請參考最新的經批准的建築圖則及其他相關圖則。
2. 部分住宅物業的露台及/或平台及/或工作平台及/或花園及/或冷氣機平台及/或外牆上/附近設有外露及/或內藏於外牆覆蓋板的公用喉管及/或其他機電設備。詳細資料請參考最新經批准的建築圖則及/或排水設施圖則。
3. 部分住宅物業之客廳、飯廳、睡房、士多房、廚房、浴室、洗手間及/或走廊之天花可能設有假天花及/或跌級樓板用以裝置冷氣系統及/或其他機電設備。
4. 樓面平面圖上所顯示的形象裝置符號，例如浴缸、淋浴間、洗滌盆、坐廁、花灑、洗滌盆櫃等乃摘錄自最新的經批准的建築圖則，只作一般性標誌，而非展示其實際大小、設計及形狀。
5. 露台及工作平台為不可封閉的地方。
6. 住宅物業有非結構預製外牆及幕牆。住宅物業之實用面積之計算包括非結構預製外牆及幕牆之面積，並由非結構預製外牆及幕牆之外圍起計。
7. 在期數管理人員安排外牆之必要維修進行期間，吊船將在期數的住宅物業之窗戶外及平台/天台/花園上方之空間運作。

#### Notes applicable to the floor plans in this section :

1. There are architectural features and/or exposed pipes on the external walls of some of the floors. For details, please refer to the latest approved building plans and other relevant plans.
2. Common pipes and/or mechanical and electrical services exposed and/or enclosed in cladding are located at/adjacent to the balcony and/or flat roof and/or utility platform and/or garden and/or air-conditioning platform and/or external wall of some residential properties. For details, please refer to the latest approved building plans and/or approved drainage plans.
3. There are ceiling bulkheads and/or sunken slabs on the ceiling at living room, dining room, bedrooms, store, kitchen, bathroom, lavatory and/or corridors of some residential properties for the installation of the air-conditioning system and/or other mechanical and electrical services.
4. Symbols of fittings and fitments shown on the floor plans, such as bathtubs, shower cubicle, sink, water closets, shower, sink counter etc. are architectural symbols retrieved from the latest approved building plans and are for general indication only and are not indications of their actual size, designs and shapes.
5. Balconies and utility platforms are non-enclosed areas.
6. There are non-structural prefabricated external walls and curtain walls in the residential properties. The saleable area of a residential property has included the area of non-structural prefabricated external walls and curtain walls and is measured from the exterior of such non-structural prefabricated external wall and curtain walls.
7. During the necessary maintenance of the external walls by manager of the Phase, the gondola will be operating in the airspace outside the window and above flat roof / roof / garden of residential properties of the Phase.



第1座 (1A及1B) 5樓  
Tower 1 (1A and 1B) 5/F



圖例  
LEGEND

供維修排水渠用之公用地方  
(設75毫米(高)基座)  
COMMON AREA FOR MAINTENANCE OF  
DRAIN PIPES (WITH 75MM (H) PLINTH)

- 洗滌盆  
SINK
- ▭ 冷氣機  
AIR CONDITIONER UNIT

比例: 0米(M) 5米(M)  
Scale:



描述 Description		每個住宅物業的層與層之間的高度（指該樓層之石屎地台面與上一層石屎地台面之高度距離）（毫米） The floor-to-floor height (refers to the height between the top surface of the structural slab of a floor and the top surface of the structural slab of its immediate upper floor) of each residential property (mm)					每個住宅物業的樓板（不包括灰泥）的厚度（毫米） The thickness of the floor slabs (excluding plaster) of each residential property (mm)							
座 Tower	樓層 Floor	單位 Unit	A	B	C	D	E	A	B	C	D	E		
第1座 (1A) Tower 1 (1A)	5樓 5/F		3600, 3750, 3950		3650, 3750, 3950			150, 215, 250		150				
座 Tower	樓層 Floor	單位 Unit	A	B	C	D	E	F	A	B	C	D	E	F
第1座 (1B) Tower 1 (1B)	5樓 5/F		3550, 3600, 3650, 3750, 3950	3600, 3650, 3750, 3950	3650, 3750, 3950				150, 215, 250		150, 300	150	150, 215	

因住宅物業的較高樓層的結構牆的厚度遞減，較高樓層的內部面積，一般比較低樓層的內部面積稍大。

備註：

- 住宅物業之天花高度將會因應其結構、建築及/或裝修設計上的差異而有所不同。
- 樓面平面圖之尺規所列數字為以毫米標示之建築結構尺寸。
- 請參閱本售樓說明書第23至25頁之圖例以協助閱讀樓面平面圖之名稱和簡稱。
- 有關噪音緩解措施之詳情，請參閱本售樓說明書的有關資料章節。

The internal areas of the residential properties on the upper floors will generally be slightly larger than those on the lower floors because of the reducing thickness of the structural walls on the upper floors.

Notes:

- The internal ceiling height within residential properties may vary due to structural, architectural and/or decoration design variations.
- The dimensions in the floor plans are all structural dimensions in millimetre.
- Please refer to pages 23 to 25 of this sales brochure for legend of the terms and abbreviations in studying the floor plans.
- For details of the noise mitigation measures, please refer to the Relevant Information section in this sales brochure.



第1座 (1A及1B)  
Tower 1 (1A and 1B)

6樓至8樓、10樓至12樓及15樓至20樓  
6/F-8/F, 10/F-12/F and 15/F-20/F





**第1座 (1A及1B) 6樓至8樓、10樓至12樓及15樓至20樓**  
**Tower 1 (1A and 1B) 6/F-8/F, 10/F-12/F and 15/F-20/F**

描述 Description		每個住宅物業的層與層之間的高度（指該樓層之石屎地台面與上一層石屎地台面之高度距離）（毫米） The floor-to-floor height (refers to the height between the top surface of the structural slab of a floor and the top surface of the structural slab of its immediate upper floor) of each residential property (mm)					每個住宅物業的樓板（不包括灰泥）的厚度（毫米） The thickness of the floor slabs (excluding plaster) of each residential property (mm)							
座 Tower	樓層 Floor	單位 Unit	A	B	C	D	E	A	B	C	D	E		
第1座 (1A) Tower 1 (1A)	6樓至7樓、10樓至12樓及 15樓至20樓 6/F-7/F, 10/F-12/F & 15/F-20/F		3150					150, 215, 250		150				
	8樓 8/F		3150, 3500		3150, 3450			150, 215, 250		150				
座 Tower	樓層 Floor	單位 Unit	A	B	C	D	E	F	A	B	C	D	E	F
第1座 (1B) Tower 1 (1B)	6樓至7樓、10樓至12樓及 15樓至20樓 6/F-7/F, 10/F-12/F & 15/F-20/F		3150					150, 215, 250		150, 300	150	150, 215		
	8樓 8/F		3150, 3450, 3500, 3550	3150, 3450, 3500	3150, 3450			150, 215, 250		150, 300	150	150, 215		

因住宅物業的較高樓層的結構牆的厚度遞減，較高樓層的內部面積，一般比較低樓層的內部面積稍大。

The internal areas of the residential properties on the upper floors will generally be slightly larger than those on the lower floors because of the reducing thickness of the structural walls on the upper floors.

備註：

- 住宅物業之天花高度將會因應其結構、建築及/或裝修設計上的差異而有所不同。
- 樓面平面圖之尺規所列數字為以毫米標示之建築結構尺寸。
- 請參閱本售樓說明書第23至25頁之圖例以協助閱讀樓面平面圖之名稱和簡稱。
- 有關噪音緩解措施之詳情，請參閱本售樓說明書的有關資料章節。
- 第1座（1A及1B）不設13樓、14樓及24樓，9樓為庇護層。

Notes:

- The internal ceiling height within residential properties may vary due to structural, architectural and/or decoration design variations.
- The dimensions in the floor plans are all structural dimensions in millimetre.
- Please refer to page 23 to 25 of this sales brochure for legend of the terms and abbreviations in studying the floor plans.
- For details of the noise mitigation measures, please refer to the Relevant Information section in this sales brochure.
- 13/F, 14/F and 24/F are omitted in Tower 1 (1A and 1B) and 9/F is refuge floor.



第1座 (1A及1B)  
Tower 1 (1A and 1B)

21樓至23樓、25樓至31樓  
21/F-23/F, 25/F-31/F



- 圖例  
LEGEND
- 吸音牆封板  
NOISE ABSORPTIVE WALL LINING
  - 洗滌盆  
SINK
  - 冷氣機  
AIR CONDITIONER UNIT

第1座(1A) 30樓及31樓 部份平面圖  
PART PLAN AT 30/F & 31/F OF TOWER 1 (1A)

第1座(1A) 29樓 部份平面圖  
PART PLAN AT 29/F OF TOWER 1 (1A)

第1座(1A) 23樓、28樓及30樓 部份平面圖  
PART PLAN AT 23/F, 28/F & 30/F OF TOWER 1 (1A)

第1座(1B) 23樓及28樓 部份平面圖  
PART PLAN AT 23/F & 28/F OF TOWER 1 (1B)

第1座(1B) 30樓及31樓 部份平面圖  
PART PLAN AT 30/F & 31/F OF TOWER 1 (1B)

第1座(1B) 29樓 部份平面圖  
PART PLAN AT 29/F OF TOWER 1 (1B)

比例: 0米(M) 5米(M)  
Scale: 0m 5m

**第1座 (1A及1B) 21樓至23樓、25樓至31樓**  
**Tower 1 (1A and 1B) 21/F-23/F, 25/F-31/F**

描述 Description		每個住宅物業的層與層之間的高度（指該樓層之石屎地台面與上一層石屎地台面之高度距離）（毫米） The floor-to-floor height (refers to the height between the top surface of the structural slab of a floor and the top surface of the structural slab of its immediate upper floor) of each residential property (mm)					每個住宅物業的樓板（不包括灰泥）的厚度（毫米） The thickness of the floor slabs (excluding plaster) of each residential property (mm)							
座 Tower	樓層 Floor	單位 Unit	A	B	C	D	E	A	B	C	D	E		
第1座 (1A) Tower 1 (1A)	21樓至23樓、25樓至28樓 21/F-23/F, 25/F-28/F		3150					150, 215, 250	150					
	29樓 29/F		3400											
	30樓 30/F		3450											
	31樓 31/F		3050, 3100, 3150, 3400, 3450, 3800	3150, 3450, 3500, 3800	3150, 3450	3150, 3450, 3750	3050, 3450, 3750							
座 Tower	樓層 Floor	單位 Unit	A	B	C	D	E	F	A	B	C	D	E	F
第1座 (1B) Tower 1 (1B)	21樓至23樓、25樓至28樓 21/F-23/F, 25/F-28/F		3150					150, 215, 250	150, 300	150	150, 215			
	29樓 29/F		3400											
	30樓 30/F		3450											
	31樓 31/F		3000, 3100, 3150, 3350, 3400, 3450, 3500, 3750, 3800, 3850	3100, 3150, 3400, 3450, 3500, 3800	3100, 3400, 3450, 3750	3150, 3450, 3750								

因住宅物業的較高樓層的結構牆的厚度遞減，較高樓層的內部面積，一般比較低樓層的內部面積稍大。

備註：

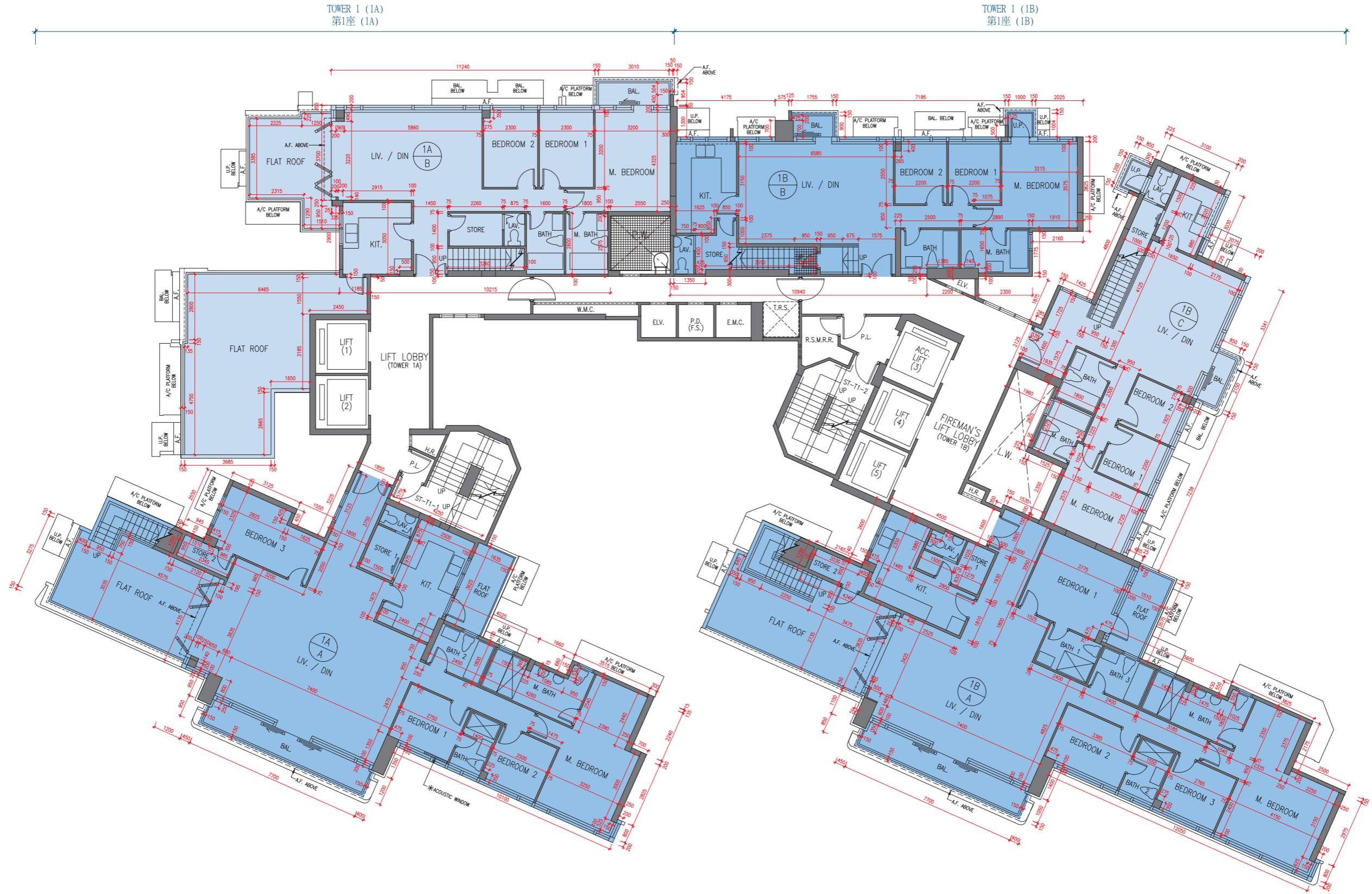
- 住宅物業之天花高度將會因應其結構、建築及/或裝修設計上的差異而有所不同。
- 樓面平面圖之尺規所列數字為以毫米標示之建築結構尺寸。
- 請參閱本售樓說明書第23至25頁之圖例以協助閱讀樓面平面圖之名稱和簡稱。
- 有關噪音緩解措施之詳情，請參閱本售樓說明書的有關資料章節。
- 第1座（1A及1B）不設13樓、14樓及24樓，9樓為庇護層。

The internal areas of the residential properties on the upper floors will generally be slightly larger than those on the lower floors because of the reducing thickness of the structural walls on the upper floors.

Notes:

- The internal ceiling height within residential properties may vary due to structural, architectural and/or decoration design variations.
- The dimensions in the floor plans are all structural dimensions in millimetre.
- Please refer to page 23 to 25 of this sales brochure for legend of the terms and abbreviations in studying the floor plans.
- For details of the noise mitigation measures, please refer to the Relevant Information section in this sales brochure.
- 13/F, 14/F and 24/F are omitted in Tower 1 (1A and 1B) and 9/F is refuge floor.





圖例  
LEGEND

□ 洗滌盆  
SINK

比例 : 0米(M) 5米(M)  
Scale: 5米(M)

描述 Description		每個住宅物業的層與層之間的高度（指該樓層之石屎地台面與上一層石屎地台面之高度距離）（毫米） The floor-to-floor height (refers to the height between the top surface of the structural slab of a floor and the top surface of the structural slab of its immediate upper floor) of each residential property (mm)			每個住宅物業的樓板（不包括灰泥）的厚度（毫米） The thickness of the floor slabs (excluding plaster) of each residential property (mm)			
座 Tower	樓層 Floor	單位 Unit	A	B	A	B		
第1座 (1A) Tower 1 (1A)	32樓 32/F		3450, 3800, 3850, 4100, 4150	3450, 3750, 3850	150, 200, 215, 300	150, 200		
座 Tower	樓層 Floor	單位 Unit	A	B	C	A	B	C
第1座 (1B) Tower 1 (1B)	32樓 32/F		3450, 3800, 3900	3450, 3750, 3800	3450, 3750	150, 200, 215, 300	150, 300	150, 200, 215

因住宅物業的較高樓層的結構牆的厚度遞減，較高樓層的內部面積，一般比較低樓層的內部面積稍大。

備註：

- 住宅物業之天花高度將會因應其結構、建築及/或裝修設計上的差異而有所不同。
- 樓面平面圖之尺規所列數字為以毫米標示之建築結構尺寸。
- 請參閱本售樓說明書第23至25頁之圖例以協助閱讀樓面平面圖之名稱和簡稱。
- 有關噪音緩解措施之詳情，請參閱本售樓說明書的有關資料章節。

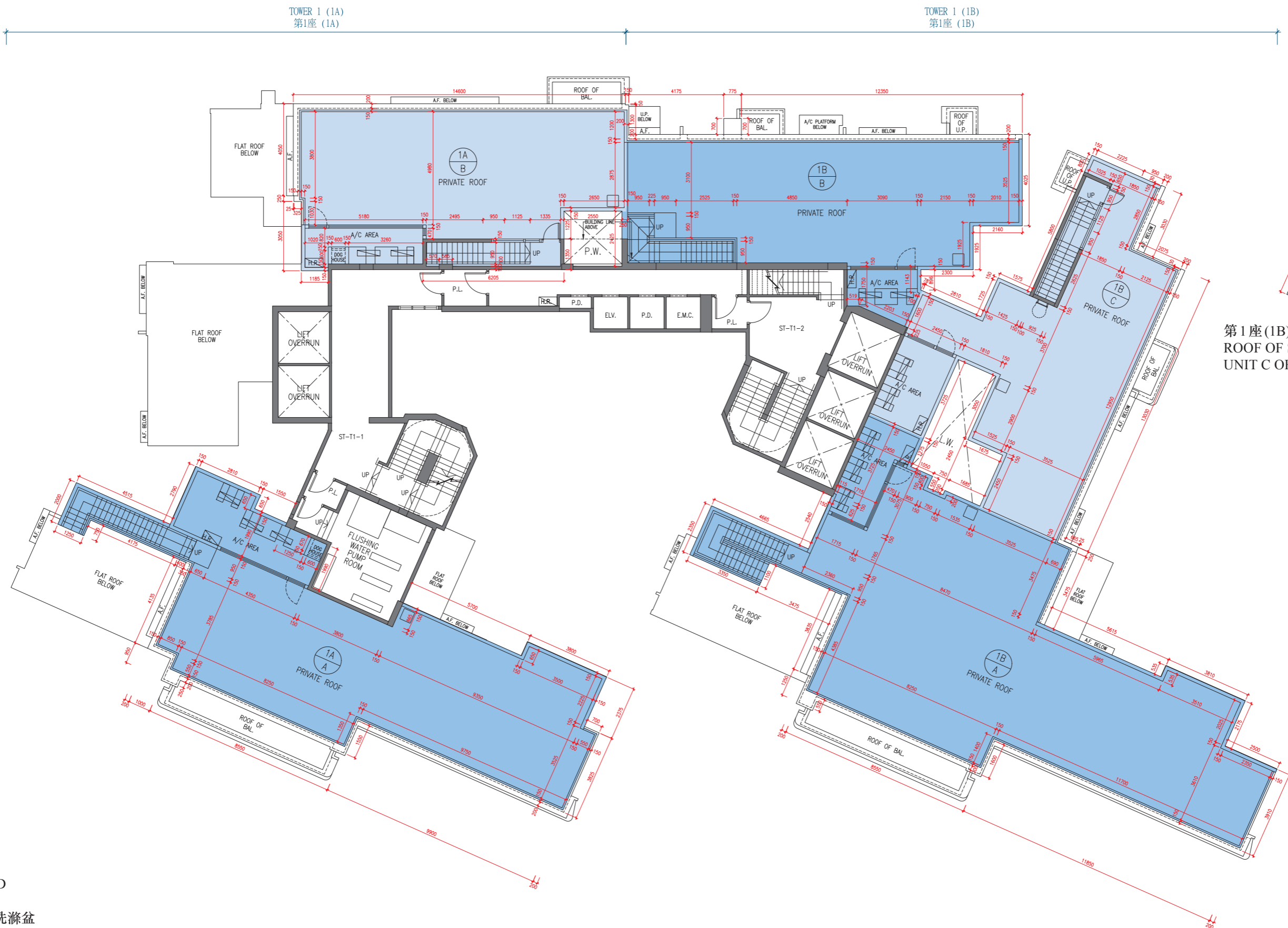
The internal areas of the residential properties on the upper floors will generally be slightly larger than those on the lower floors because of the reducing thickness of the structural walls on the upper floors.

Notes:

- The internal ceiling height within residential properties may vary due to structural, architectural and/or decoration design variations.
- The dimensions in the floor plans are all structural dimensions in millimetre.
- Please refer to pages 23 to 25 of this sales brochure for legend of the terms and abbreviations in studying the floor plans.
- For details of the noise mitigation measures, please refer to the Relevant Information section in this sales brochure.



第1座 (1A及1B) 天台  
Tower 1 (1A and 1B) Roof



第1座(1B) C單位之梯屋上蓋  
ROOF OF STAIRHOOD FOR  
UNIT C OF TOWER 1 (1B)

圖例  
LEGEND

-  洗滌盆  
SINK
-  冷氣機  
AIR CONDITIONER UNIT

比例：0米(M) 5米(M)  
Scale: 

**第1座 (1A及1B) 天台**  
**Tower 1 (1A and 1B) Roof**

描述 Description		每個住宅物業的層與層之間的高度（指該樓層之石屎地台面與上一層石屎地台面之高度距離）（毫米） The floor-to-floor height (refers to the height between the top surface of the structural slab of a floor and the top surface of the structural slab of its immediate upper floor) of each residential property (mm)			每個住宅物業的樓板（不包括灰泥）的厚度（毫米） The thickness of the floor slabs (excluding plaster) of each residential property (mm)				
座 Tower	樓層 Floor	單位 Unit		A	B	A	B		
第1座 (1A) Tower 1 (1A)	天台 Roof			不適用 Not applicable	3350	不適用 Not applicable	150		
座 Tower	樓層 Floor	單位 Unit		A	B	C	A	B	C
第1座 (1B) Tower 1 (1B)	天台 Roof			不適用 Not applicable		3000	不適用 Not applicable		150

因住宅物業的較高樓層的結構牆的厚度遞減，較高樓層的內部面積，一般比較低樓層的內部面積稍大。

備註：

- 住宅物業之天花高度將會因應其結構、建築及/或裝修設計上的差異而有所不同。
- 樓面平面圖之尺規所列數字為以毫米標示之建築結構尺寸。
- 請參閱本售樓說明書第23至25頁之圖例以協助閱讀樓面平面圖之名稱和簡稱。
- 有關噪音緩解措施之詳情，請參閱本售樓說明書的有關資料章節。

The internal areas of the residential properties on the upper floors will generally be slightly larger than those on the lower floors because of the reducing thickness of the structural walls on the upper floors.

Notes:

- The internal ceiling height within residential properties may vary due to structural, architectural and/or decoration design variations.
- The dimensions in the floor plans are all structural dimensions in millimetre.
- Please refer to pages 23 to 25 of this sales brochure for legend of the terms and abbreviations in studying the floor plans.
- For details of the noise mitigation measures, please refer to the Relevant Information section in this sales brochure.



第2座 (2A及2B) 5樓  
Tower 2 (2A and 2B) 5/F



圖例  
LEGEND

供維修排水渠用之公用地方 (設75毫米(高)基座)  
COMMON AREA FOR MAINTENANCE OF DRAIN PIPES (WITH 75MM (H) PLINTH)

- 洗滌盆  
SINK
- 冷氣機  
AIR CONDITIONER UNIT

比例: 0米(M) 5米(M)  
Scale:

描述 Description		每個住宅物業的層與層之間的高度（指該樓層之石屎地台面與上一層石屎地台面之高度距離）（毫米） The floor-to-floor height (refers to the height between the top surface of the structural slab of a floor and the top surface of the structural slab of its immediate upper floor) of each residential property (mm)						每個住宅物業的樓板（不包括灰泥）的厚度（毫米） The thickness of the floor slabs (excluding plaster) of each residential property (mm)						
座 Tower	樓層 Floor	單位 Unit	A	B	C	D	E	F	A	B	C	D	E	F
第2座 (2A) Tower 2 (2A)	5樓 5/F		3650, 3750, 3950	3600, 3650, 3750, 3950	3600, 3650, 3700, 3750, 3950	3650, 3750, 3950	3575, 3650, 3750, 3950	3650, 3750, 3950	150, 215					
座 Tower	樓層 Floor	單位 Unit	A		B	C		G	A	B		C		G
第2座 (2B) Tower 2 (2B)	5樓 5/F				3650, 3750, 3950				150, 215			150		

因住宅物業的較高樓層的結構牆的厚度遞減，較高樓層的內部面積，一般比較低樓層的內部面積稍大。

備註：

- 住宅物業之天花高度將會因應其結構、建築及/或裝修設計上的差異而有所不同。
- 樓面平面圖之尺規所列數字為以毫米標示之建築結構尺寸。
- 請參閱本售樓說明書第23至25頁之圖例以協助閱讀樓面平面圖之名稱和簡稱。
- 有關噪音緩解措施之詳情，請參閱本售樓說明書的有關資料章節。

The internal areas of the residential properties on the upper floors will generally be slightly larger than those on the lower floors because of the reducing thickness of the structural walls on the upper floors.

Notes:

- The internal ceiling height within residential properties may vary due to structural, architectural and/or decoration design variations.
- The dimensions in the floor plans are all structural dimensions in millimetre.
- Please refer to pages 23 to 25 of this sales brochure for legend of the terms and abbreviations in studying the floor plans.
- For details of the noise mitigation measures, please refer to the Relevant Information section in this sales brochure.

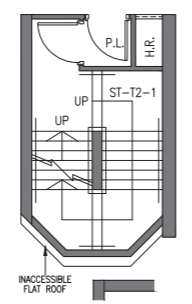


第2座 (2A及2B) 6樓至8樓  
Tower 2 (2A and 2B) 6/F-8/F

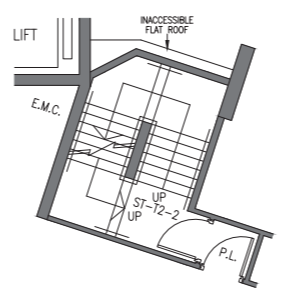


圖例  
LEGEND

-  洗滌盆  
SINK
-  冷氣機  
AIR CONDITIONER UNIT



第2座(2B) 6樓 部份平面圖  
PART PLAN AT 6/F OF TOWER 2 (2B)



第2座(2A) 6樓 部份平面圖  
PART PLAN AT 6/F OF TOWER 2 (2A)

比例: 0米(M) 5米(M)  
Scale: 

**第2座 (2A及2B) 6樓至8樓**  
**Tower 2 (2A and 2B) 6/F-8/F**

描述 Description		每個住宅物業的層與層之間的高度（指該樓層之石屎地台面與上一層石屎地台面之高度距離）（毫米） The floor-to-floor height (refers to the height between the top surface of the structural slab of a floor and the top surface of the structural slab of its immediate upper floor) of each residential property (mm)						每個住宅物業的樓板（不包括灰泥）的厚度（毫米） The thickness of the floor slabs (excluding plaster) of each residential property (mm)								
座 Tower	樓層 Floor	單位 Unit	A	B	C	D	E	F	A	B	C	D	E	F		
第2座 (2A) Tower 2 (2A)	6樓至7樓 6/F-7/F		3150						150, 215						150	
	8樓 8/F		3150, 3450	3150, 3450, 3500	3150, 3400, 3450, 3500	3150, 3450	3150, 3450, 3525	3150, 3450	150, 215						150	
座 Tower	樓層 Floor	單位 Unit	A	B	C	D	E	F	G	A	B	C	D	E	F	G
第2座 (2B) Tower 2 (2B)	6樓至7樓 6/F-7/F		3150						150, 215	150						
	8樓 8/F		3150, 3450			3150, 3450, 3500	3150, 3450	3150, 3450, 3525	3150, 3450	150, 215	150					

因住宅物業的較高樓層的結構牆的厚度遞減，較高樓層的內部面積，一般比較低樓層的內部面積稍大。

The internal areas of the residential properties on the upper floors will generally be slightly larger than those on the lower floors because of the reducing thickness of the structural walls on the upper floors.

備註：

- 住宅物業之天花高度將會因應其結構、建築及/或裝修設計上的差異而有所不同。
- 樓面平面圖之尺規所列數字為以毫米標示之建築結構尺寸。
- 請參閱本售樓說明書第23至25頁之圖例以協助閱讀樓面平面圖之名稱和簡稱。
- 有關噪音緩解措施之詳情，請參閱本售樓說明書的有關資料章節。

Notes:

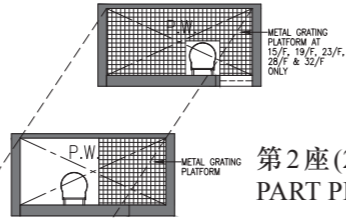
- The internal ceiling height within residential properties may vary due to structural, architectural and/or decoration design variations.
- The dimensions in the floor plans are all structural dimensions in millimetre.
- Please refer to pages 23 to 25 of this sales brochure for legend of the terms and abbreviations in studying the floor plans.
- For details of the noise mitigation measures, please refer to the Relevant Information section in this sales brochure.



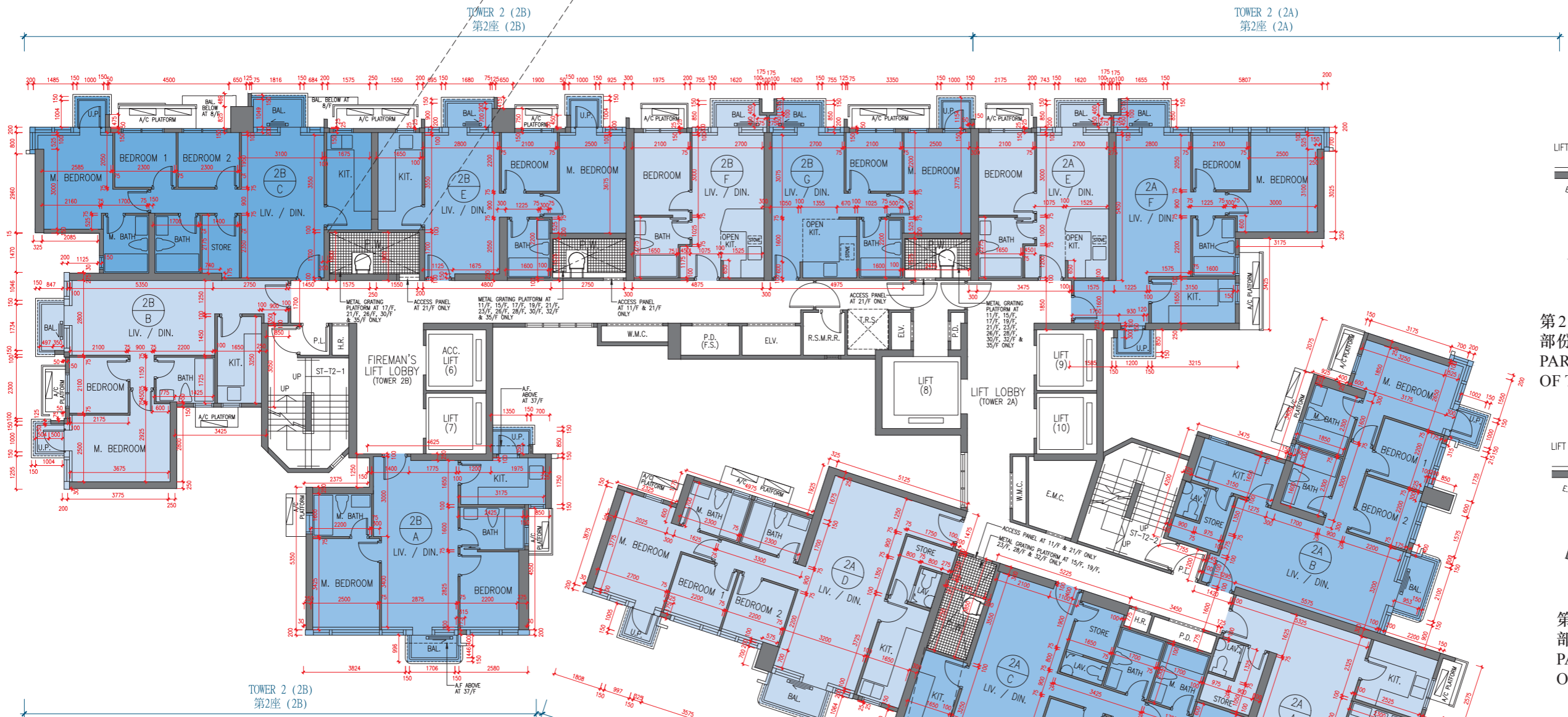
第2座 (2A及2B)  
Tower 2 (2A and 2B)

10樓至12樓、15樓至23樓、25樓至33樓及35樓至36樓  
10/F-12/F, 15/F-23/F, 25/F-33/F and 35/F-36/F

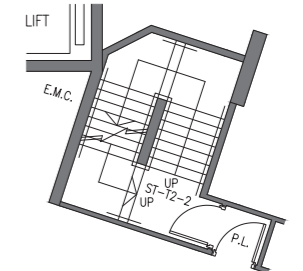
第2座(2B) 15樓、19樓、23樓、28樓及32樓 部份平面圖  
PART PLAN AT 15/F, 19/F, 23/F, 28/F & 32/F OF TOWER 2 (2B)



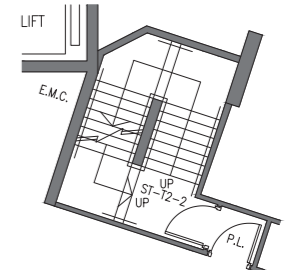
第2座(2B) 10樓 部份平面圖  
PART PLAN AT 10/F OF TOWER 2 (2B)



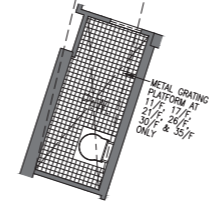
第2座(2A) 30樓至36樓 部份樓平面圖  
PART PLAN AT 30/F TO 36/F OF TOWER 2 (2A)



第2座(2A) 29樓 部份平面圖  
PART PLAN AT 29/F OF TOWER 2 (2A)



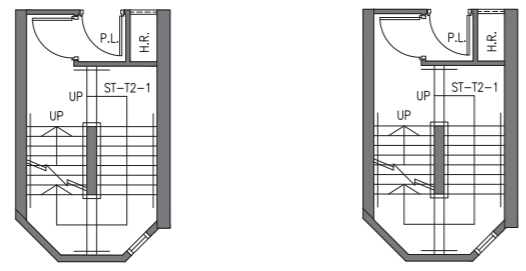
第2座(2A) 11樓、17樓、21樓、26樓、30樓及35樓 部份平面圖  
PART PLAN AT 11/F, 17/F, 21/F, 26/F, 30/F & 35/F OF TOWER 2 (2A)



- 圖例  
LEGEND
- 洗滌盆  
SINK
  - 冷氣機  
AIR CONDITIONER UNIT

第2座(2B) 29樓 部份平面圖  
PART PLAN AT 29/F OF TOWER 2 (2B)

第2座(2B) 30樓至36樓 部份平面圖  
PART PLAN AT 30/F TO 36/F OF TOWER 2 (2B)



比例: 0米(M) 5米(M)  
Scale:

**第2座 (2A及2B) 10樓至12樓、15樓至23樓、25樓至33樓及35樓至36樓**  
**Tower 2 (2A and 2B) 10/F-12/F, 15/F-23/F, 25/F-33/F and 35/F-36/F**

描述 Description		每個住宅物業的層與層之間的高度（指該樓層之石屎地台面與上一層石屎地台面之高度距離）（毫米） The floor-to-floor height (refers to the height between the top surface of the structural slab of a floor and the top surface of the structural slab of its immediate upper floor) of each residential property (mm)						每個住宅物業的樓板（不包括灰泥）的厚度（毫米） The thickness of the floor slabs (excluding plaster) of each residential property (mm)						
座 Tower	樓層 Floor	單位 Unit	A	B	C	D	E	F	A	B	C	D	E	F
第2座 (2A) Tower 2 (2A)	10樓至12樓、15樓至23樓及 25樓至28樓 10/F-12/F, 15/F-23/F & 25/F-28/F		3150											
	29樓 29/F		3400						150, 215					
	30樓至33樓及35樓至36樓 30/F-33/F & 35/F-36/F		3450											
座 Tower	樓層 Floor	單位 Unit	A	B	C	E	F	G	A	B	C	E	F	G
第2座 (2B) Tower 2 (2B)	10樓至12樓、15樓至23樓及 25樓至28樓 10/F-12/F, 15/F-23/F & 25/F-28/F		3150											
	29樓 29/F		3400						150, 215					
	30樓至33樓及35樓 30/F-33/F & 35/F		3450						150					
	36樓 36/F		3150, 3450, 3750	3450										

因住宅物業的較高樓層的結構牆的厚度遞減，較高樓層的內部面積，一般比較低樓層的內部面積稍大。

The internal areas of the residential properties on the upper floors will generally be slightly larger than those on the lower floors because of the reducing thickness of the structural walls on the upper floors.

備註：

- 住宅物業之天花高度將會因應其結構、建築及/或裝修設計上的差異而有所不同。
- 樓面平面圖之尺規所列數字為以毫米標示之建築結構尺寸。
- 請參閱本售樓說明書第23至25頁之圖例以協助閱讀樓面平面圖之名稱和簡稱。
- 有關噪音緩解措施之詳情，請參閱本售樓說明書的有關資料章節。
- 第2座（2A及2B）不設13樓、14樓、24樓及34樓，9樓為庇護層。

Notes:

- The internal ceiling height within residential properties may vary due to structural, architectural and/or decoration design variations.
- The dimensions in the floor plans are all structural dimensions in millimetre.
- Please refer to page 23 to 25 of this sales brochure for legend of the terms and abbreviations in studying the floor plans.
- For details of the noise mitigation measures, please refer to the Relevant Information section in this sales brochure.
- 13/F, 14/F, 24/F and 34/F are omitted in Tower 2 (2A and 2B) and 9/F is refuge floor.



第2座 (2A及2B) 37樓  
Tower 2 (2A and 2B) 37/F



圖例  
LEGEND

-  洗滌盆  
SINK
-  冷氣機  
AIR CONDITIONER UNIT

比例: 0米(M) 5米(M)  
Scale: 

描述 Description		每個住宅物業的層與層之間的高度（指該樓層之石屎地台面與上一層石屎地台面之高度距離）（毫米） The floor-to-floor height (refers to the height between the top surface of the structural slab of a floor and the top surface of the structural slab of its immediate upper floor) of each residential property (mm)						每個住宅物業的樓板（不包括灰泥）的厚度（毫米） The thickness of the floor slabs (excluding plaster) of each residential property (mm)						
座 Tower	樓層 Floor	單位 Unit	A	B	C	D	E	F	A	B	C	D	E	F
第2座 (2A) Tower 2 (2A)	37樓 37/F		3150, 3450, 3750	3000, 3100, 3300, 3450, 3750, 3800	3000, 3050, 3100, 3150, 3350, 3400, 3450, 3750, 3800	3100, 3150, 3450, 3750	3450, 3750, 3825	3100, 3150, 3400, 3450, 3750	150, 215			150		
座 Tower	樓層 Floor	單位 Unit	A	B	C	E	F	G	A	B	C	E	F	G
第2座 (2B) Tower 2 (2B)	37樓 37/F		3100, 3400, 3450, 3500, 3750	3100, 3150, 3400, 3450, 3750	3150, 3450, 3750	3050, 3100, 3150, 3450, 3750	3400, 3450, 3475, 3750, 3825	3100, 3150, 3400, 3450, 3750	150, 215	150				

因住宅物業的較高樓層的結構牆的厚度遞減，較高樓層的內部面積，一般比較低樓層的內部面積稍大。

備註：

- 住宅物業之天花高度將會因應其結構、建築及/或裝修設計上的差異而有所不同。
- 樓面平面圖之尺規所列數字為以毫米標示之建築結構尺寸。
- 請參閱本售樓說明書第23至25頁之圖例以協助閱讀樓面平面圖之名稱和簡稱。
- 有關噪音緩解措施之詳情，請參閱本售樓說明書的有關資料章節。
- 第2座 (2B) 37樓至38樓A單位為複式單位。

The internal areas of the residential properties on the upper floors will generally be slightly larger than those on the lower floors because of the reducing thickness of the structural walls on the upper floors.

Notes:

- The internal ceiling height within residential properties may vary due to structural, architectural and/or decoration design variations.
- The dimensions in the floor plans are all structural dimensions in millimetre.
- Please refer to page 23 to 25 of this sales brochure for legend of the terms and abbreviations in studying the floor plans.
- For details of the noise mitigation measures, please refer to the Relevant Information section in this sales brochure.
- Unit A on 37/F - 38/F of Tower 2 (2B) is a duplex unit.



第2座 (2A及2B) 38樓  
Tower 2 (2A and 2B) 38/F



圖例  
LEGEND

- 洗滌盆  
SINK

比例 : 0米(M) 5米(M)  
Scale: 5米(M)

描述 Description		每個住宅物業的層與層之間的高度（指該樓層之石屎地台面與上一層石屎地台面之高度距離）（毫米） The floor-to-floor height (refers to the height between the top surface of the structural slab of a floor and the top surface of the structural slab of its immediate upper floor) of each residential property (mm)			每個住宅物業的樓板（不包括灰泥）的厚度（毫米） The thickness of the floor slabs (excluding plaster) of each residential property (mm)			
座 Tower	樓層 Floor	單位 Unit	A	B	C	A	B	C
第2座 (2A) Tower 2 (2A)	38樓 38/F		3450, 3750, 3800, 3900, 3950	3450, 3750, 3800, 3850, 3900	3450, 3750, 3800	150, 200	150, 200, 215, 250	150, 200, 300
座 Tower	樓層 Floor	單位 Unit	A	B	C	A	B	C
第2座 (2B) Tower 2 (2B)	38樓 38/F		3450, 3800	3450, 3750, 3800, 4100	3450, 3750, 3800, 4100, 4150	150, 215	150, 200, 300	150

因住宅物業的較高樓層的結構牆的厚度遞減，較高樓層的內部面積，一般比較低樓層的內部面積稍大。

備註：

- 住宅物業之天花高度將會因應其結構、建築及/或裝修設計上的差異而有所不同。
- 樓面平面圖之尺規所列數字為以毫米標示之建築結構尺寸。
- 請參閱本售樓說明書第23至25頁之圖例以協助閱讀樓面平面圖之名稱和簡稱。
- 有關噪音緩解措施之詳情，請參閱本售樓說明書的有關資料章節。
- 第2座 (2B) 37樓至38樓A單位為複式單位。

The internal areas of the residential properties on the upper floors will generally be slightly larger than those on the lower floors because of the reducing thickness of the structural walls on the upper floors.

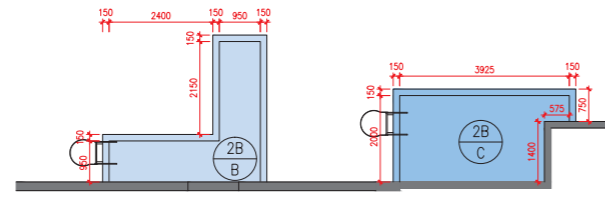
Notes:

- The internal ceiling height within residential properties may vary due to structural, architectural and/or decoration design variations.
- The dimensions in the floor plans are all structural dimensions in millimetre.
- Please refer to page 23 to 25 of this sales brochure for legend of the terms and abbreviations in studying the floor plans.
- For details of the noise mitigation measures, please refer to the Relevant Information section in this sales brochure.
- Unit A on 37/F - 38/F of Tower 2 (2B) is a duplex unit.

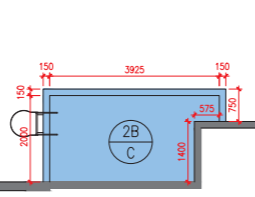


第2座 (2A及2B)  
Tower 2 (2A and 2B)

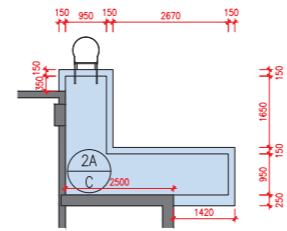
天台  
Roof



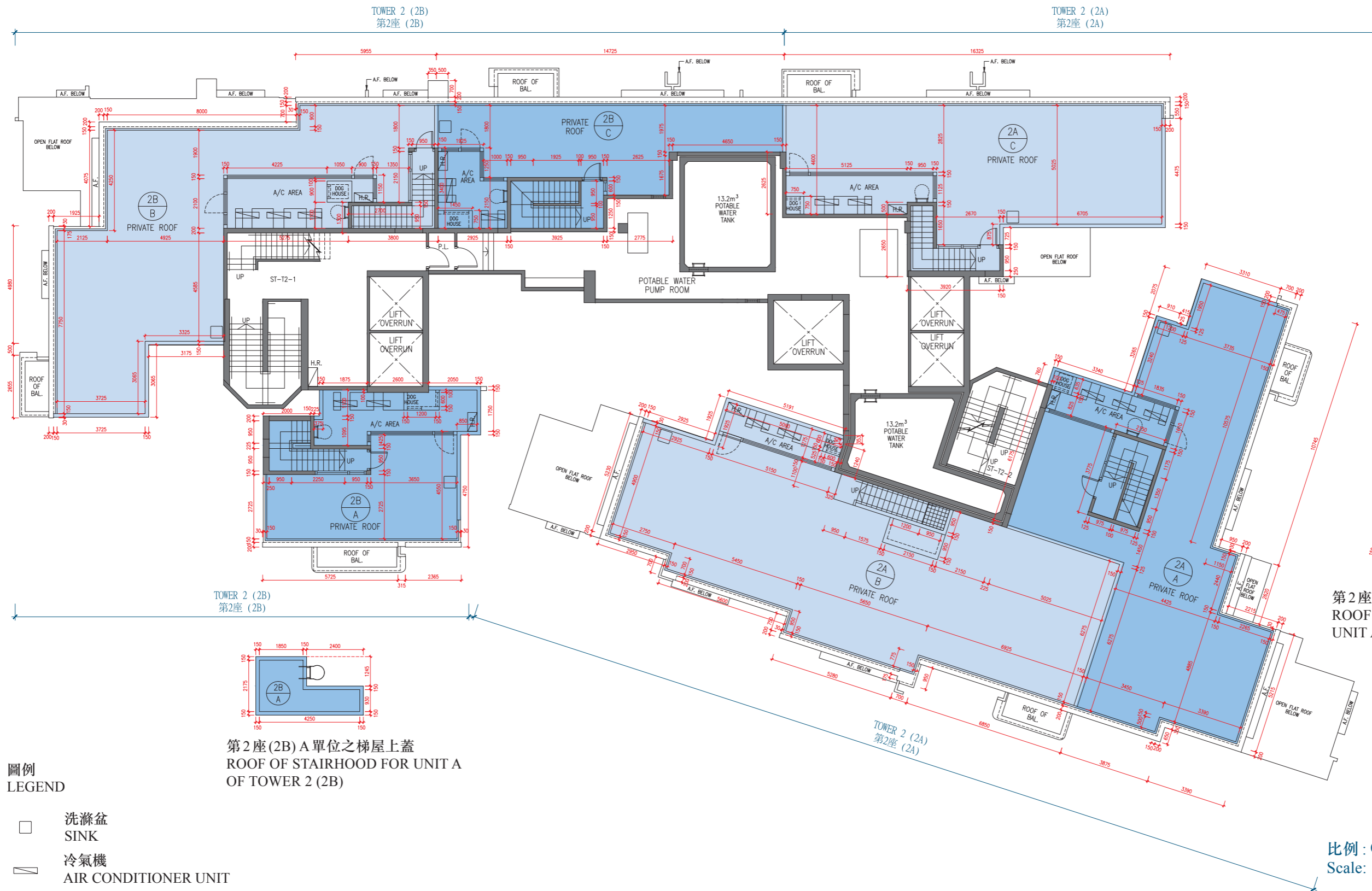
第2座(2B) B單位之梯屋上蓋  
ROOF OF STAIRHOOD FOR UNIT B  
OF TOWER 2 (2B)



第2座(2B) C單位之梯屋上蓋  
ROOF OF STAIRHOOD FOR UNIT C  
OF TOWER 2 (2B)



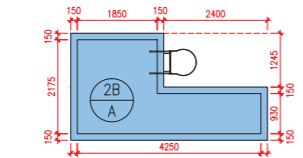
第2座(2A) C單位之梯屋上蓋  
ROOF OF STAIRHOOD FOR UNIT C  
OF TOWER 2 (2A)



TOWER 2 (2B)  
第2座 (2B)

TOWER 2 (2A)  
第2座 (2A)

第2座(2A) A單位之梯屋上蓋  
ROOF OF STAIRHOOD FOR  
UNIT A OF TOWER 2 (2A)



第2座(2B) A單位之梯屋上蓋  
ROOF OF STAIRHOOD FOR UNIT A  
OF TOWER 2 (2B)

圖例  
LEGEND

- 洗滌盆  
SINK
- 冷氣機  
AIR CONDITIONER UNIT

比例: 0米(M) 5米(M)  
Scale:

**第2座 (2A及2B) 天台**  
**Tower 2 (2A and 2B) Roof**

描述 Description		每個住宅物業的層與層之間的高度（指該樓層之石屎地台面與上一層石屎地台面之高度距離）（毫米） The floor-to-floor height (refers to the height between the top surface of the structural slab of a floor and the top surface of the structural slab of its immediate upper floor) of each residential property (mm)			每個住宅物業的樓板（不包括灰泥）的厚度（毫米） The thickness of the floor slabs (excluding plaster) of each residential property (mm)			
座 Tower	樓層 Floor	單位 Unit	A	B	C	A	B	C
第2座 (2A) Tower 2 (2A)	天台 Roof		3000	不適用 Not applicable	3000	150	不適用 Not applicable	200
座 Tower	樓層 Floor	單位 Unit	A	B	C	A	B	C
第2座 (2B) Tower 2 (2B)	天台 Roof		3000		2650, 3150	200		150

因住宅物業的較高樓層的結構牆的厚度遞減，較高樓層的內部面積，一般比較低樓層的內部面積稍大。

備註：

- 住宅物業之天花高度將會因應其結構、建築及/或裝修設計上的差異而有所不同。
- 樓面平面圖之尺規所列數字為以毫米標示之建築結構尺寸。
- 請參閱本售樓說明書第23至25頁之圖例以協助閱讀樓面平面圖之名稱和簡稱。
- 有關噪音緩解措施之詳情，請參閱本售樓說明書的有關資料章節。

The internal areas of the residential properties on the upper floors will generally be slightly larger than those on the lower floors because of the reducing thickness of the structural walls on the upper floors.

Notes:

- The internal ceiling height within residential properties may vary due to structural, architectural and/or decoration design variations.
- The dimensions in the floor plans are all structural dimensions in millimetre.
- Please refer to pages 23 to 25 of this sales brochure for legend of the terms and abbreviations in studying the floor plans.
- For details of the noise mitigation measures, please refer to the Relevant Information section in this sales brochure.